



Vic Systems

Presents



GOLD WING BREEDER PULLET Production Systems

Simple, effective and complete
management system for
breeder pullets.

GOLD WING BREEDER PULLET Objectives :

- Improve body weight uniformity
- Improved skeletal development
- Higher feed efficiency
- Healthier bird. Avoid compromising immune system
- Increased livability
- Males
 - Improved frame size development during first six weeks

Each of these components is independent, but, combining them together

OPTIMUM SERIES

- Two variable stages
- Twelve relay outputs with override switches
- Two air inlet outputs (POT)
- Two 0-10 Volt outputs
- Water meter input
- Two time clock outputs
- Memory stick



HUMIDITY PROBE

- Manage minimum ventilation
- Control ammonia and humidity for good air quality



EXPERT SERIES

- Two variable fan stages
- Thirteen on / off fan stages
- Eight low / high fire heat stages
- Three cooling stages
- Up to twelve air inlet zones
- Up to twenty-four time clock outputs
- Water meter input
- Light program



WATER MANAGEMENT

Auto-Flush

- Program automatic flush start time
- Program water line flushing sequence
- Manual start and stop buttons



SUPER COOL MISTING

Super Cool 1000

Relative humidity strategy allows cooling to start before temperature affects bird performance



- 1000 PSI
- Brass slip-lok fitting
- Easy to install flexible tubing
- CAT pump



Water Meter

- Detect equipment problem or disease outbreak
- Track daily usage



EXHAUST FANS

Chimney Fans

- MultiMax motors from Multifan
- Damper control



Monocoque Fans

- One piece fan and hood
- Perfect for minimum ventilation stages



Vortex Fans

- Fiberglass housings, Cast aluminum blade, Cone
- High CFM, Excellent CFM/Watt, Bess Lab certified
- Ideal for intermediate, maximum and tunnel stages





AIR INLETS

Inlet Actuators

Durable Vic Jack actuator provides precise inlet opening and closing



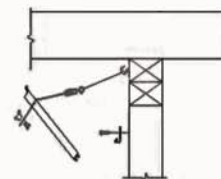
Modular Inlets

Modular inlet provides precise air speed and direction during minimum ventilation



Baffle Inlets

Continuous inlet provides even air pattern during intermediate and maximum ventilation



FEED WEIGHING

Feed Weigher

- Small batch weighing for restricted feeding
- Works with electric feed drops
- Load cells are inside the building



Hopper Weigher

- Large batch weighing for restricted feeding
- Match hopper size to requirement
- Load cells are inside the building
- Works with electric feed drops



Bin Weigher

- Accurate restricted feeding direct from bin
- Displays feed bin inventory
- Requires no space in the building



FEEDING CONTROLS

Auger Manager

- Shows current operating status for all feed and fill systems
- Compare daily and cumulative run times to verify house uniformity
- Maximum run time curve
- Alarms for maximum run time and maximum off time



Electric Feed Drop

- Automatically opens and closes on signal
- Total feed clean out



LIGHTING CONTROL

LC-7 Model

Create precise light programs

- Sunrise/sunset simulation
- Light peaks
- Manual mode
- Auto mode
- 30 amp capacity



AGRI-ALERT

- Four models to match specific needs
- From eight to ninety-six zones for temperature, dry contacts, bio-security
- Programmable alarm delays
- Dialing of alarms to multiple phone numbers
- Security with up to ten user access codes



BIRD WEIGHING

- Provides accurate information on pullets weight & uniformity
- Daily weight deviation
- Daily uniformity bandwidth



Platform is not in the litter



GOLD WING BREEDER PULLET PROGRAM provides daily performance information for management to make simple, concise decisions to improve all elements of production:

- Daily body weight
- Daily bird weight uniformity
- Water consumption
- Air and ventilation quality
- Light program

Knowing this information gives the broiler producer immediate recognition of specific problems so that changes can be made at the time of the incident rather than waiting until the pullets move to the layer house and there are no clues as to what happened.

For example :

- Overcrowding in parts of the house
- Disease outbreak
- Effect of a ration change
- Feed problem
- Equipment problem
- Temperature fluctuations
- Temperature uniformity
- Air quality
- Effect of light program
- Inaccurate feed weighing
- Male body frame development

ENHANCED MANAGEMENT WITH E2E SOFTWARE

- Web based. Needs only Internet Explorer to view all information and reports.
- Multiple users can access data simultaneously.
- Automatically generates reports on a daily basis or as specified.
- Automatically sends emails to specified recipients.
- Automatically downloads information to the hard drive for up to two years.



For more information on GOLD WING PULLET please contact :

Authorized dealer



5200 Armand-Frappier
 St-Hubert, (Qc) Canada J3Z 1G5
 Toll free : 1-800-567-0550
 Fax : (450) 926-2780
 sales@vicsystems.com
 www.vicsystems.com